

## BUTLERBUILT SEAT MEASUREMENT PROCEDURE

The measurement procedure outlined is critical in determining proper dimensions of the seat. The seat is guaranteed to fit the dimensions provided. If the procedures are not followed, the seat will not fit the driver correctly.

### TAKE YOUR TIME AND BE CAREFUL

It is imperative that all dimensions are **ABSOLUTE STRAIGHT LINES**. A rigid tape measure, steel ruler, or yardstick should be used.

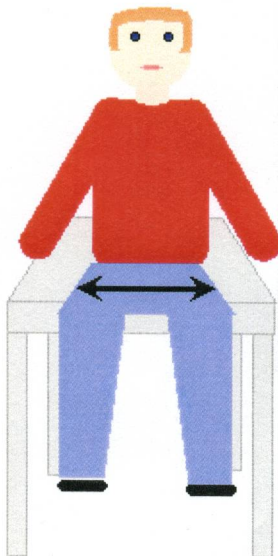
If using a tape measure, be sure to keep it in a straight line. **DO NOT LET THE TAPE FOLLOW THE NATURAL CURVATURE OF THE BODY...THIS WILL SEND MEASUREMENTS TO THE MOON!!!**

The driver should be wearing relatively tight fitting clothes. Baggy clothing can lead to difficulty in obtaining the proper measurements required.

Do not compensate for upholstery materials or driving suits.

It is necessary to provide ButlerBuilt with the chassis design and the type of racing the driver is competing in, to determine sitting position under racing conditions.

Restraint Systems are important. ButlerBuilt builds seats to be compatible with these systems. To build your seat properly, it is imperative to know whether you are using a "Y" style or individual mount shoulder harness, and what type of Head and Neck Restraint System is being used.



### STEP 1

Have the driver sit on a large flat surface, such as a workbench, table or desk. We need this surface as a reference point. The driver's feet will be hanging over the side.

#### **DO NOT SIT ON THE FLOOR OR A CHAIR!!!**

Spread the knees 8" to 10" apart.

Place the tape measure on the outside of the left thigh.

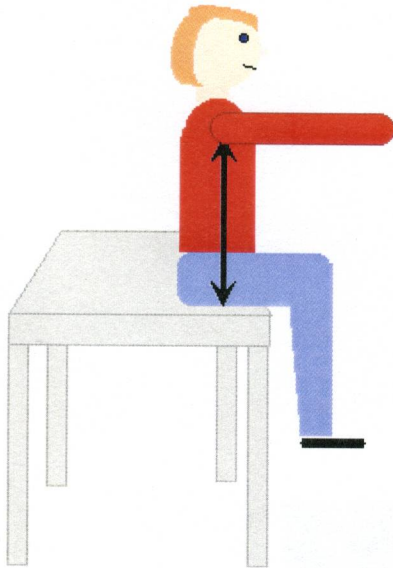
Pull the tape in a **STRAIGHT LINE** across the groin area, to the right outer thigh.

Using two right angle devices laid against the body and measuring between them can accurately simplify this dimension

These procedures were designed and developed by Brian T. Butler, President of Butler Specialties, Inc. and are protected by copyright for the sole purpose of designing and manufacturing ButlerBuilt Racing Seats

© Butler Specialties, Inc. January 1983-2003

## BUTLERBUILT SEAT MEASUREMENT PROCEDURE



### STEP 2

Have the driver sit upright with good posture.

Pull the right arm only, straight forward as if holding the steering wheel.

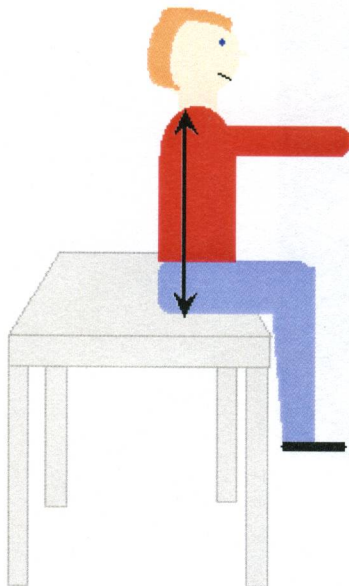
Take a step back and visually see that the shoulders are level.

#### **THIS IS VERY IMPORTANT FOR ACCURACY!**

The tendency is that the right shoulder will usually be picked up when the arm is raised, so the driver may need to relax his shoulder to match the left side.

Come around to the right side of the driver's body.

Measure vertically from the table top to the center of the armpit.



### STEP 3

With the driver sitting in the exact same body position, measuring from the right side of the body, take a vertical dimension from the table top to the top of the shoulder.

We are most concerned with the area where the shoulder harness will cross over the top of the shoulders, which is the muscular position at the base of the neck.

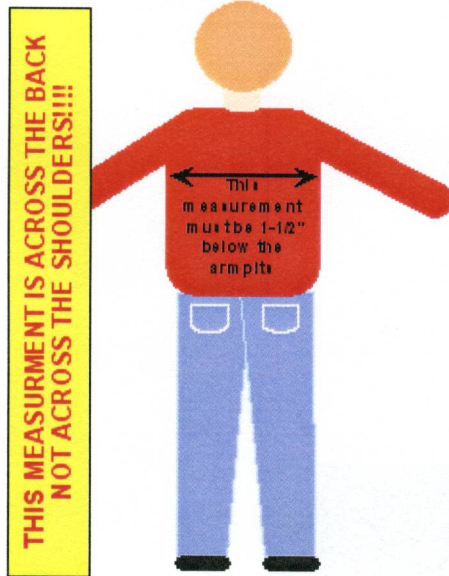
**PLEASE REMEMBER...**

**STRAIGHT LINE MEASUREMENTS ARE CRITICAL!!!**

These procedures were designed and developed by Brian T. Butler, President of Butler Specialties, Inc. and are protected by copyright for the sole purpose of designing and manufacturing ButlerBuilt Racing Seats

© Butler Specialties, Inc. January 1 1983-2003

# BUTLERBUILT SEAT MEASUREMENT PROCEDURE



## STEP 4

**THIS IS THE MOST CRITICAL MEASUREMENT**

**PLEASE TAKE YOUR TIME!**

**THIS MEASUREMENT IS TAKEN ACROSS THE BACK NOT.....FROM SHOULDER TO SHOULDER**

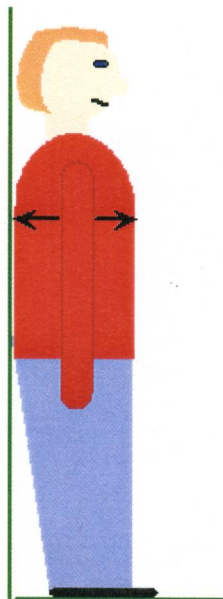
Have the driver stand with his back to you.

Arms should be held away from the body at approximately a 30° angle, with a clear line of sight under the arms.

Place the tape measure 1-1/2" below the armpit.

Starting at this point pull the tape straight across the back to the opposite point 1-1/2" below the armpit.

**IT IS ABSOLUTELY IMPERATIVE THAT THIS DIMENSION BE A STRAIGHT HORIZONTAL LINE MEASUREMENT!**



## STEP 5

This is for the depth of the chest cavity.

Back the driver up against a flat surface, such as a wall or a door.

Place the measuring tape under the arm.

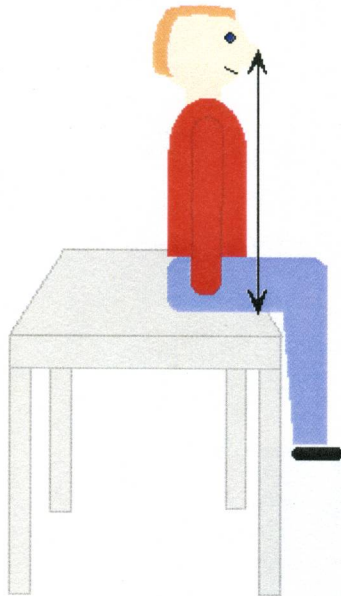
Measure the distance from the wall to the front of the chest.

**THIS IS A STRAIGHT HORIZONTAL LINE MEASUREMENT**

These procedures were designed and developed by Brian T. Butler, President of Butler Specialties, Inc. and are protected by copyright for the sole purpose of designing and manufacturing ButlerBuilt Racing Seats

© Butler Specialties, Inc. January 1983-2003

## BUTLERBUILT SEAT MEASUREMENT PROCEDURE

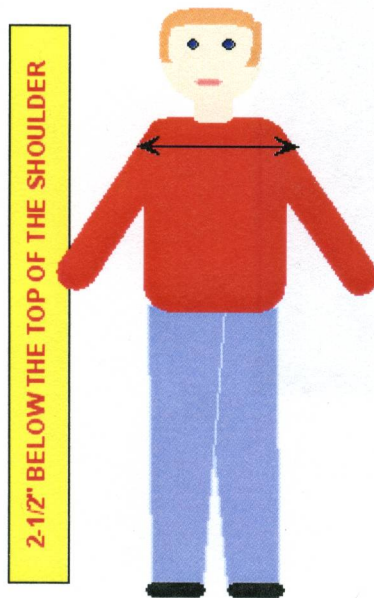


### STEP 6

Have the driver sit in an upright position with good spinal posture and looking straight ahead.

Measure from tabletop to the tip of the nose.

**THIS SHOULD BE A STRAIGHT VERTICAL LINE MEASUREMENT.**



### STEP 7

Have driver face you holding the arms slightly away from the body.

Place the tape measure on the outside of the left arm 2-1/2" below the top of the shoulder.

Take a **STRAIGHT LINE** measurement from this point on the left arm to the outside of the right arm.

These procedures were designed and developed by Brian T. Butler, President of Butler Specialties, Inc. and are protected by copyright for the sole purpose of designing and manufacturing ButlerBuilt Racing Seats

© Butler Specialties, Inc. January 1983-2003

## BUTLERBUILT SEAT MEASUREMENT PROCEDURE

BILLING NAME: \_\_\_\_\_

BILLING ADDRESS: \_\_\_\_\_

CITY: \_\_\_\_\_

STATE: \_\_\_\_\_ ZIP CODE: \_\_\_\_\_

SHIPPING ADDRESS: \_\_\_\_\_

CITY: \_\_\_\_\_

STATE: \_\_\_\_\_ ZIP CODE: \_\_\_\_\_

HOME PHONE: \_\_\_\_\_

WORK PHONE: \_\_\_\_\_

FAX PHONE: \_\_\_\_\_

CELL PHONE: \_\_\_\_\_

E-MAIL ADDRESS: \_\_\_\_\_

WEBSITE: \_\_\_\_\_

PAYMENT METHOD: COD \_\_\_\_\_ VISA \_\_\_\_\_ MASTER CARD \_\_\_\_\_

CREDIT CARD NO: \_\_\_\_\_ EXPIRATION DATE \_\_\_\_/\_\_\_\_/\_\_\_\_

CARDHOLDER'S NAME: \_\_\_\_\_

CREDIT CARD BILLING ADDRESS: \_\_\_\_\_

CITY: \_\_\_\_\_

STATE: \_\_\_\_\_ ZIP CODE: \_\_\_\_\_

REFERRED BY: \_\_\_\_\_

### **BUTLERBUILT MOTORSPORTS EQUIPMENT**

**Mailing Address: PO Box 459**

**Harrisburg, NC 28075**

**Shipping Address: 70 Pitts School Rd NW**

**Concord, NC 28027**

**Phone: 800-621-SEAT Fax: 704-784-1024**

# BUTLERBUILT SEAT MEASUREMENT PROCEDURE

For Custom Seat Orders all the information below must be accurately filled in.  
If you have any questions please contact us.

DRIVER'S NAME: \_\_\_\_\_

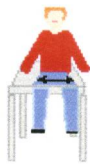
DRIVER'S BIRTH DATE: \_\_\_\_\_

SEAT STYLE: \_\_\_\_\_

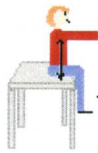
UPHOLSTERY: VELOUR \_\_\_\_\_ CLOTH \_\_\_\_\_

UPHOLSTERY COLOR: BLACK \_\_\_\_\_ RED \_\_\_\_\_ BLUE \_\_\_\_\_ GRAY \_\_\_\_\_

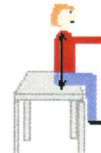
HEIGHT: \_\_\_\_\_ WEIGHT: \_\_\_\_\_



MEASUREMENT  
FROM STEP 1



MEASUREMENT  
FROM STEP 2



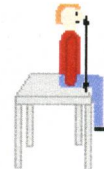
MEASUREMENT  
FROM STEP 3



MEASUREMENT  
FROM STEP 4



MEASUREMENT  
FROM STEP 5



MEASUREMENT  
FROM STEP 6



MEASUREMENT  
FROM STEP 7

SHOULDER HARNESS: "Y" STYLE \_\_\_\_\_ INDIVIDUAL MOUNT \_\_\_\_\_

HEAD & NECK RESTRAINT USED: HANS \_\_\_\_\_ STRAP TYPE \_\_\_\_\_

TYPE OF RACE CAR: \_\_\_\_\_ CHASSIS MANUFACTURER: \_\_\_\_\_

RACING SERIES COMPETING IN \_\_\_\_\_

ASPHALT TRACK \_\_\_\_\_ DIRT TRACK \_\_\_\_\_ ROAD COURSE \_\_\_\_\_

## BUTLERBUILT MOTORSPORTS EQUIPMENT

Mailing Address: PO Box 459

Harrisburg, NC 28075

Shipping Address: 70 Pitts School Rd NW

Concord, NC 28027

Phone: 800-621-SEAT Fax: 704-784-1024